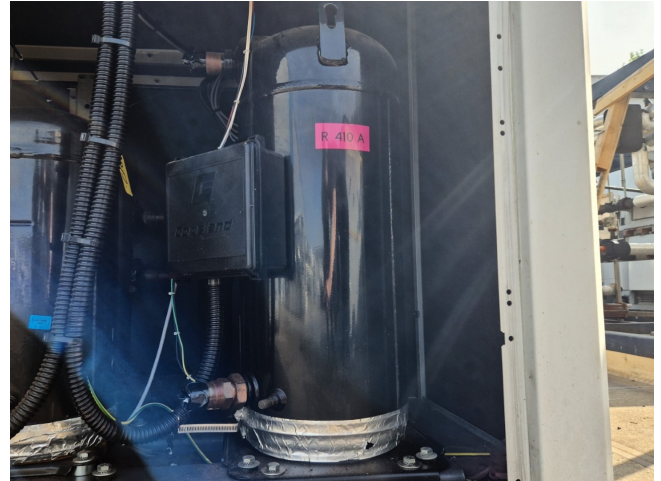


# Copeland ZP235KCE-TWD-522

## Specifications

Marca	Copeland
Tipo	ZP235KCE-TWD-522
Refrigerante	Freon
kW at +10°C/+40°C	69,7
kW at 0°C/+40°C	48,8
kW at -5°C/+40°C	40,3
kW at -10°C/+40°C	32,9
kW at -20°C/+40°C	21,0
m3 / h	50 Hz - 36,3 m <sup>3</sup> /h / 60 Hz - 43,9 m <sup>3</sup> /h
Peso kg.	140 kg (net weight)
Tamaños	450x600x750 mm (LxWxH)
Stock	2



## Description

### Used Copeland ZP235KCE-TWD-522

Used Copeland ZP235KCE-TWD-522 hermetic scroll compressor on Freon. The compressor has a displacement of 36,3 m<sup>3</sup>/h at 50 Hz & 43,9 m<sup>3</sup>/h at 60 Hz. Capacity based on the use of R410A.

\*Why choose for HOSBV? Were not only the largest used refrigeration specialist in Europe, but also, we deliver all equipment including an extensive test, warranty and industrial cleaning. \*If requested we are happy to arrange your shipment.

